

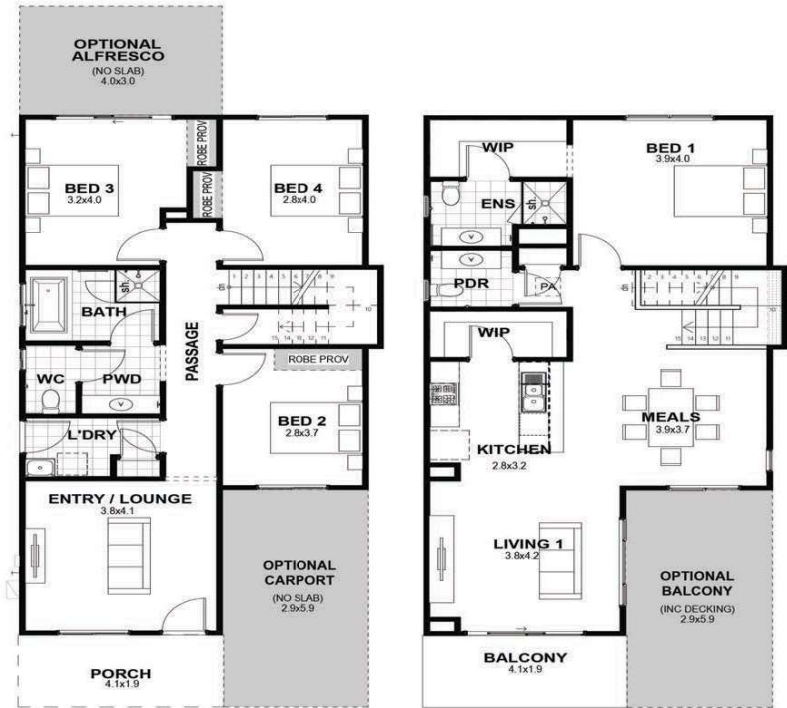
Gardenwood

🏠 4 | 🛏 2.5

The Gardenwood is designed for modern living, with the kitchen, dining, and living areas situated upstairs, featuring a generous walk-in pantry. The master bedroom, complete with a walk-in robe and ensuite, is also upstairs, along with a separate powder room and the option for a balcony. Downstairs, You will find the remaining bedrooms, an additional formal lounge, and the option for a carport, making this home both stylish and functional.

Specifications

Total area	195.12m ²
Width	7m
Length	16.23m



Ground Living

Upper Living

